



**EFFECTIVE AEROSOL TREATMENTS**

**AND FUN FOR KIDS!**



**PRO-Vent™**  
TECHNOLOGY

PARI's PRO-Vent masks feature a front-loaded design that directs aerosol toward the patient's mouth for optimized delivery of aerosol. These soft, flexible masks are proven to deliver more medication while reducing facial and eye deposition.<sup>1</sup>

[www.pari.com/pro-vent](http://www.pari.com/pro-vent)

## FUN, SAFE, OPTIMIZED DELIVERY

PARI Adult Aerosol Mask



PARI Bubbles™  
Pediatric Aerosol Mask



### Configurations

	Part #	HCPCS #
PARI Bubbles™ Ages 3+ Years	044F7254	A7015
PARI Adult Aerosol Mask	044F7252	A7015

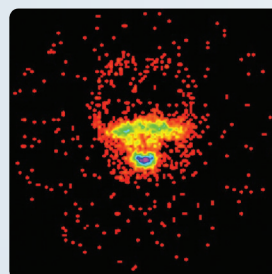
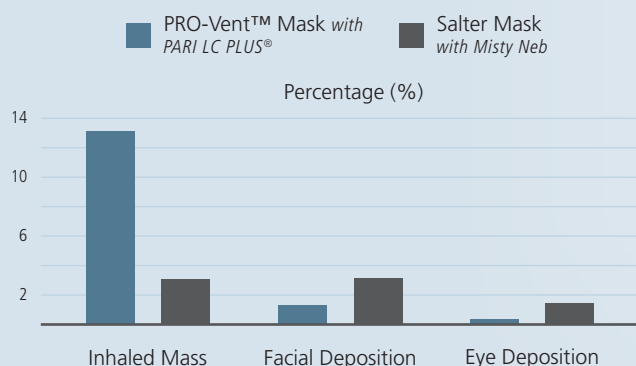
### Accessories

	Part #
PARI LC® Sprint	023F35
PARI LC PLUS®	022F81
PARI PALS™ Activity Book	044D0029
PARI PALS™ Stickers	044D0030

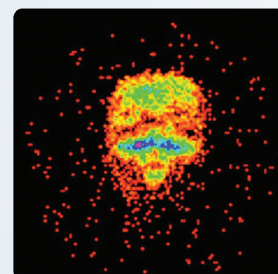
## THE DIFFERENCE IS IN THE DELIVERY

A higher Inhaled Mass combined with lower facial and eye deposition gives patients increased drug delivery to the lungs with reduced exposure to the eyes and skin.<sup>††</sup>

### PRO-Vent™ Mask vs. Bottom Load Mask



PRO-Vent™ Mask



Salter Mask



**PARI** Respiratory Equipment, Inc.  
Tel: 1-800-FAST-NEB (327-8632)  
product.info@pari.com  
www.pari.com | Midlothian, VA 23112

<sup>†</sup> Facial and Ocular Deposition of Nebulized Budesonide. K. Harris, G. Smaldone. CHEST 2008; 133:482-488. Tables 2-3.

<sup>\*</sup> All registered marks and trademarks belong to their respective companies.

<sup>††</sup> Testing done with PARI Bubbles the Fish II Mask and PARI LC Plus nebulizer.